

# LED DockLight



## FEATURES

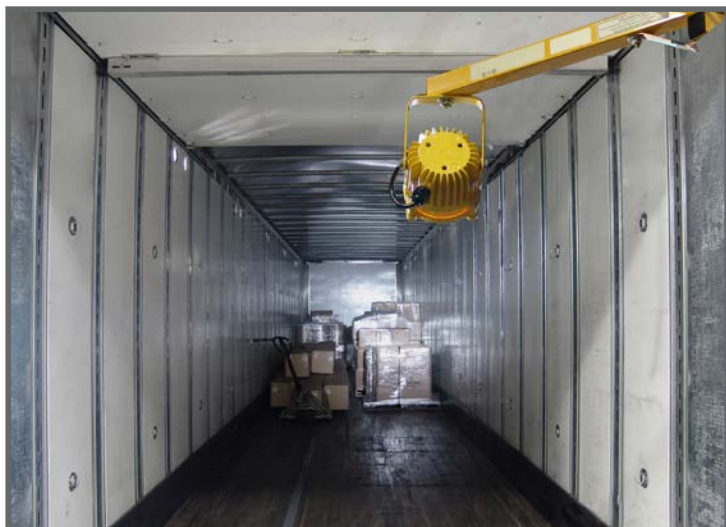
- Sustainable lighting with a powerful output
- Industrial luminaire with 15 watt power consumption
- 50,000 hours rated life reducing maintenance significantly
- Durable exterior to hold up to the toughest environments
- Non-corrosive and safe to use outdoors
- Safety yellow for maximum visibility
- Several electrical connections available
- cUL rated for wet locations
- Attaches directly to standard dock light arms for easy retrofit
- Purchase the compatible arm of your choice in 24", 42" or 60" lengths



LED DockLights offer energy efficient high output bright light in a durable exterior. Non-corrosive and UL rated for wet locations, the LED DockLight is suited for the toughest indoor and outdoor applications.

Complete with impact resistant, optically clear acrylic lens and 5 high-intensity LED emitters with custom focusing optics, the LED DockLight provides a consistent quality and low maintenance lighting solution helping you be green.

Patent # USD0587833 US Patent # 6,302,571 US Patent # 6,545,288

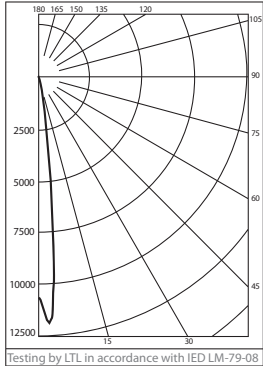




## SPECIFICATIONS

### Candlepower Curve

IES format photometrics are available at [www.energyfocusinc.com](http://www.energyfocusinc.com)



### Light Output

The powerful LED Docklight has been designed to deliver light all the way back into a 53' trailer!

	10'	20'	30'	40'	45'	48'	53'
LED DockLight12° CBCP: 10,571 cd	105	20	12	6.6	5.2	4.6	3.8
Quartz Halogen	28	14	8	5			
Incandescent	15	5	3	2			

Beam Angle: FWHM (Full Width Half Max)  
Light Output in FC

### LED DockLight Compatible Arms



- Strong, non-corrosive single strut steel arm with on/off switch and female receptical

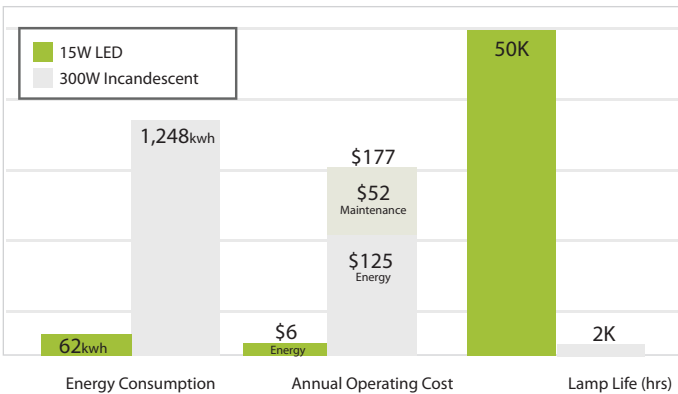
- Available in 24", 42" and 60" lengths

- 42" and 60" have an articulated arm

- Wear resistant 3 conductor AC cord fits directly into standard outlet

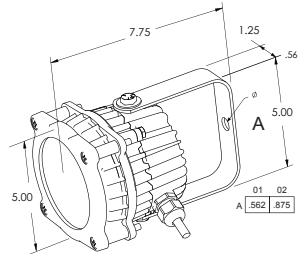
### Comparison

Assumptions: Annual Hours = 4160hrs Energy Cost = 10¢/kwh Cost to change lightbulb = \$5.00 each



### Design

Protected by Patent # USD0587833  
US Patent # 6,302,571 US Patent # 6,545,288



### LED DockLight

### Ordering Guide

Model	Color Temp	Beam Spread	Size	Electrical Connection	Mount/Finish
LEDDL	765 75 CRI, 6500K	NSP 12° Beam NFL 32° Beam	15 Small Fixture 15Watt	<b>PNS</b> 10' cord, std. male plug (Nema 5-15) wet rated <b>PIS*</b> 10' cord, hooded male plug (IEC 60320-C14 plug) wet rated <b>SNS</b> Switched 10' cord, std. male plug (Nema 5-15) damp rated <b>SIA</b> Switched 16" cord, hooded male plug (IEC 60320-C14) damp rated <b>HWS</b> 10' cord, hardwire leads wet rated	<b>SY</b> Standard Arm Mount; Yellow <b>CY</b> Cooper Arm Mount; Yellow <b>TY</b> Trunion Mount; Yellow
Arm:					
Model	Type	Arm			
LEDDL	ARM	24 Arm length 24" 42 Arm length 42", Articulated 60 Arm length 60", Articulated			

\* Arm needs to be ordered with PIS or SIA electrical connection

