

TOKISTAR TokiLux



TOKISTAR LIGHTING



TokiLux™

TokiLux is a compact high-performance LED luminaire for use within tight architectural details and in a variety of casework and shelf conditions. The system delivers excellent white light without the damaging ultra-violet and infrared wavelengths produced by conventional light sources.

TokiLux consumes only 6 Watts per foot, operates from 24VAC transformers and is fully dimmable. The remarkable life ratings of our LEDs and replaceable Light Bars ensure the system will provide years of continuous service.

Specify by Catalog Number

TLX - IW

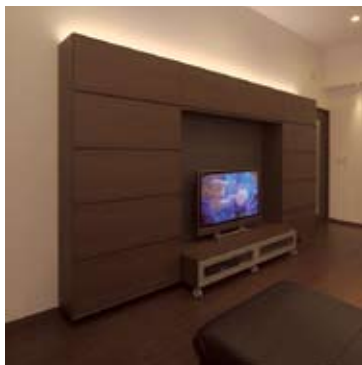
LED			
Code	Lumens Per Foot	CRI Value	Kelvin
NW	215 Lm	85	4500K
IW	195 Lm	85	3000K



The system's low-operating temperature is perfectly suited for illuminating heat sensitive objects.



TokiLux higher output and CRI values are ideal for applications in showcase lighting.



TokiLux provides accents in a variety of indirect applications.

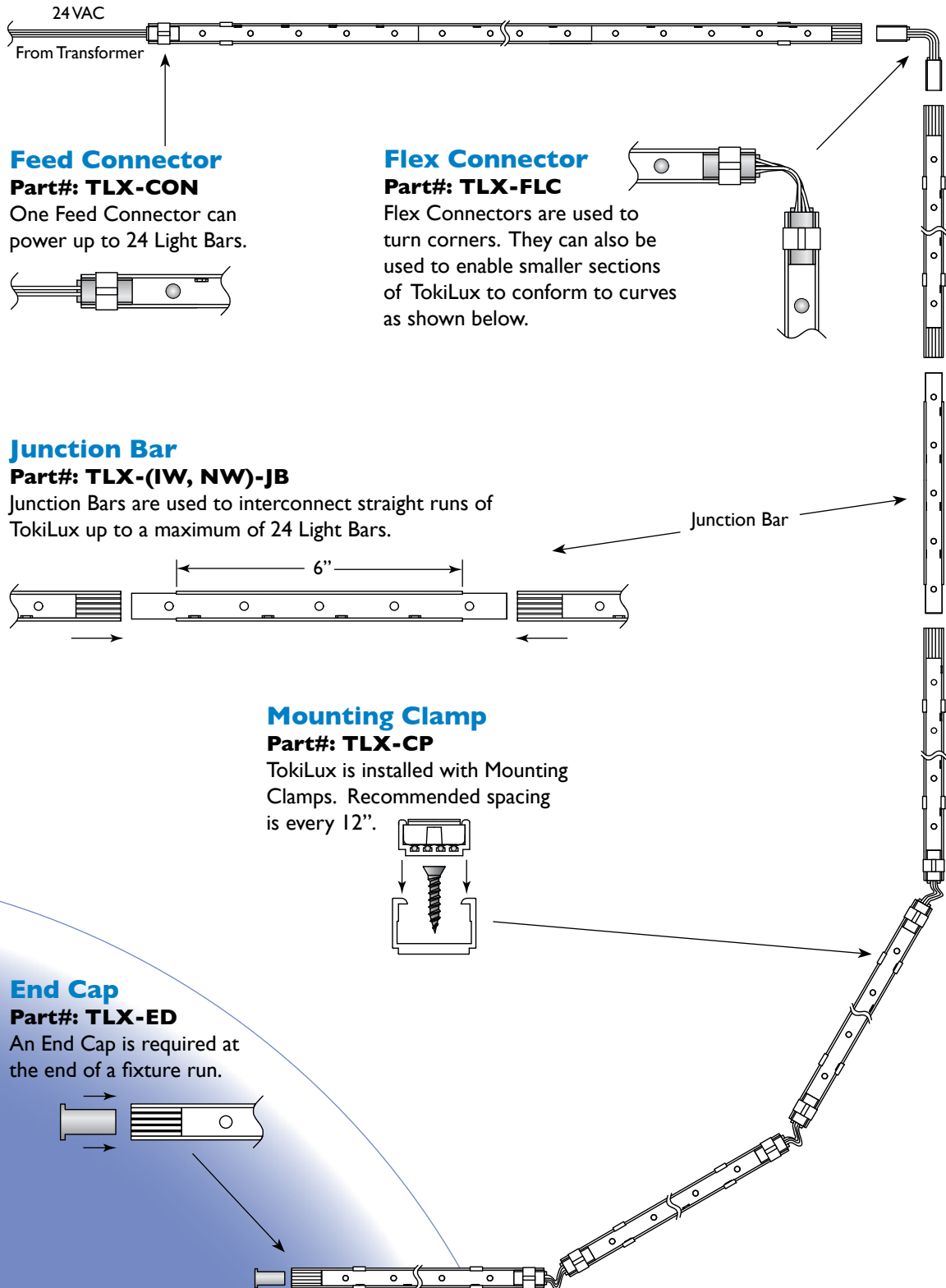


Edge lighting is a popular application of TokiLux.



System Overview

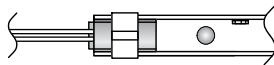
TokiLux fixtures come with Light Bars inserted into a track. A single track can have up to 12 Light Bars. Multiple tracks can be interconnected with up to 24 Light Bars. The graphic below includes TokiLux with associated components. The system operates from 24VAC magnetic transformers.



Feed Connector

Part#: TLX-CON

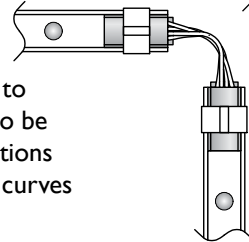
One Feed Connector can power up to 24 Light Bars.



Flex Connector

Part#: TLX-FLC

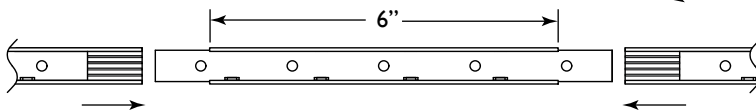
Flex Connectors are used to turn corners. They can also be used to enable smaller sections of TokiLux to conform to curves as shown below.



Junction Bar

Part#: TLX-(IW, NW)-JB

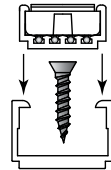
Junction Bars are used to interconnect straight runs of TokiLux up to a maximum of 24 Light Bars.



Mounting Clamp

Part#: TLX-CP

TokiLux is installed with Mounting Clamps. Recommended spacing is every 12".



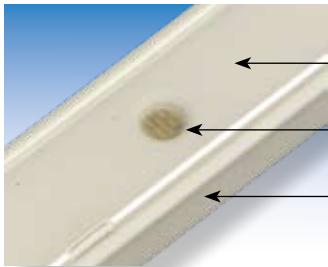
End Cap

Part#: TLX-ED

An End Cap is required at the end of a fixture run.



Specifications



← **Light Bars** are rigid polycarbonate with flammability rating UL 94V-2

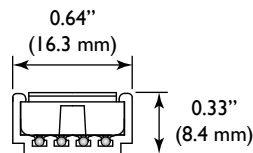
← **Light Sources** are 0.80 Watt LEDs (5 per Light Bar)

← **TokiLux Track** is rigid polycarbonate with flammability rating UL 94V-0

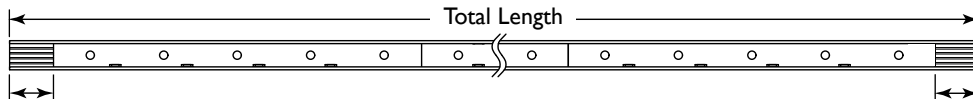


Sizes and Lengths

Lengths shown in the chart to the right include space at the ends of each track to accommodate Connectors, Junction Bars or End Caps. Spacing of the LEDs is consistent throughout the system creating a uniform lighting effect.

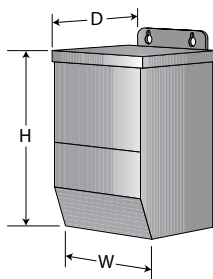


Part Number	No. of Bars	Length	Watts / Volts
TLX-(IW, NW)-1	1	9 7/8"	4.0 W / 24 VAC
TLX-(IW, NW)-2	2	17 3/4"	8.0 W / 24 VAC
TLX-(IW, NW)-3	3	25 5/8"	12.0 W / 24 VAC
TLX-(IW, NW)-4	4	33 1/2"	16.0 W / 24 VAC
TLX-(IW, NW)-5	5	41 3/8"	20.0 W / 24 VAC
TLX-(IW, NW)-6	6	49 1/4"	24.0 W / 24 VAC
TLX-(IW, NW)-7	7	57 1/8"	28.0 W / 24 VAC
TLX-(IW, NW)-8	8	65"	32.0 W / 24 VAC
TLX-(IW, NW)-9	9	72 7/8"	36.0 W / 24 VAC
TLX-(IW, NW)-10	10	80 3/4"	40.0 W / 24 VAC
TLX-(IW, NW)-11	11	88 5/8"	44.0 W / 24 VAC
TLX-(IW, NW)-12	12	96 1/2"	48.0 W / 24 VAC



Transformers

TokiLux operates from 24VAC Class 2 Transformers with inherent secondary circuit protection. Primary input is 120VAC/60 Hz. The transformer is dimmable with most low-voltage dimming systems. Consult factory on other input voltages.



Class 2 - 24 Volt					
Part Number	Outputs	D	H	W	Weight
C2-40-24V	1 @ 40 Watt / 24 VAC	2.25"	5.75"	2.25"	2 lbs
C2-96-24V	1 @ 96 Watt / 24 VAC	2.5"	6.5"	3.0"	3 lbs
C2-192-24V	2 @ 96 Watt / 24 VAC	5.0"	7.0"	5.0"	12 lbs
C2-288-24V	3 @ 96 Watt / 24 VAC	5.0"	7.0"	5.0"	12 lbs
C2-480-24V	5 @ 96 Watt / 24 VAC	6.0"	8.0"	6.0"	20 lbs

TOKISTAR® LIGHTING INC.

1561 N. Gemini Place • Anaheim, CA 92801

Tel: 714.772.7005 • Fax: 714.772.7014 • Toll free in U.S.A.: 877.340.7633

E-mail: info@tokistar.com • Web site: www.tokistar.com